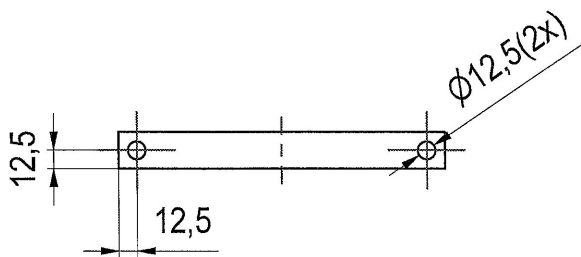
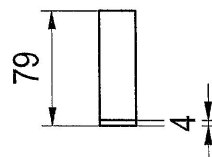
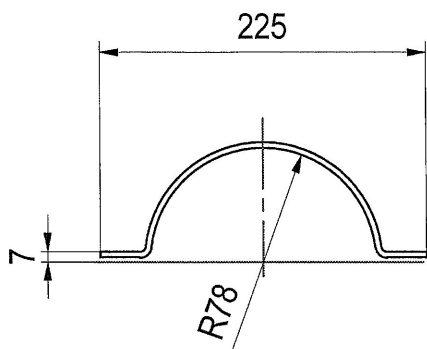


# PŘEKLAD

dne: 26-07-2017

PROVEDLA  
JANA PROKEŠOVÁ

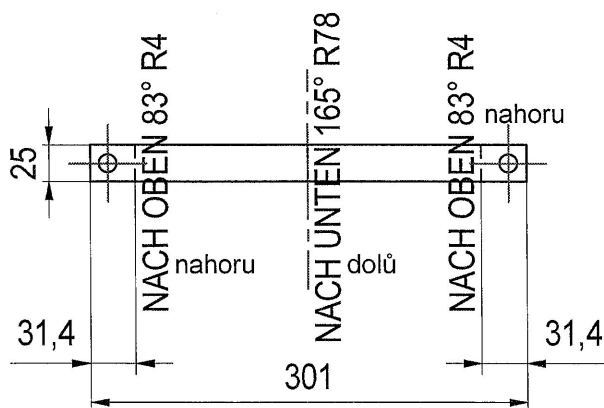


Abwicklung<sup>rozvin</sup> / true length ( 1 : 5 )

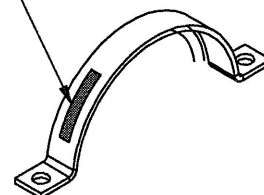
ARCHIV

27-07-2017

0



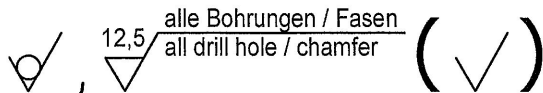
označení  
Markierung /  
marking



ZM/17/00485

Außenkante/chamfer DIN ISO 13715

Všechny vyvrtané otvory / skosení



Freimaßtoleranzen für Bearbeitung  
General tolerances for treatment  
ISO 2768 mH

Benennung / Title

Bl.4...25x301mm

Pl.4...25x301mm

Dateiname / filename:  
E00082861.idw

Art.Nr. / item no.:  
50018070

Werkstoff / Material:  
S355J2G3

Behandlung / conditioning:  
verzinkt

Masse / Mass:  
0,230 kg

Zeichnungsnummer / ident number:  
RM120.D0.05.003

Format / Size:  
A4  
Blatt / Page:  
1 / 1

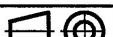
Maßstab / Scale:  
1 : 5

Gezeichnet  
Drawn

Datum  
Date  
01.02.2016

Name  
Name  
Ton J

Änderung / Rev.:  
ISO 128-30



Kontrolliert  
Checked